

Operations Manual

Endurance Pro X2M - Semi-automatic Dough Press, Interchangeable Molds
Model #: DP2010M



PROLUXE
WWW.PROLUXE.COM

Version: 82223

Congratulations on your selection of the Endurance Pro X2 Dough Press. Proluxe is a leading manufacturer of food preparation and cooking equipment designed for the most demanding commercial kitchens. Proluxe equipment is a result of the highest quality engineering and time-tested design.

This manual includes installation, operation, and maintenance procedures for your new Endurance Pro X2 Dough Press. Please read this manual carefully and keep it with your machine for proper operation and lasting service.

INSTALLATION

Domestic

Use a separate 30 amp AC circuit. Only industrial extension cords with proper wire size should be used; size 16/3 wire for distance up to 25 feet, and size 14/3 for distance up to 50 feet.

International

Use a designated 16 amp AC circuit. Only industrial extension cords with proper wire size (2.5 sq. mm) shall be used. Make sure

there is a proper electrical wall outlet located within reach of the cord and plug attached to the press.

Place the dough press in an area which allows for “swing clearance” of the upper platen. The upper platen rotates up to 90°, in a backward rotation, to facilitate the removal of the dough product after the press cycle has been completed.

The machine requires a vertical clearance of 33” from the bottom of the machine to the top of the pull handle shown in FIG. 1.

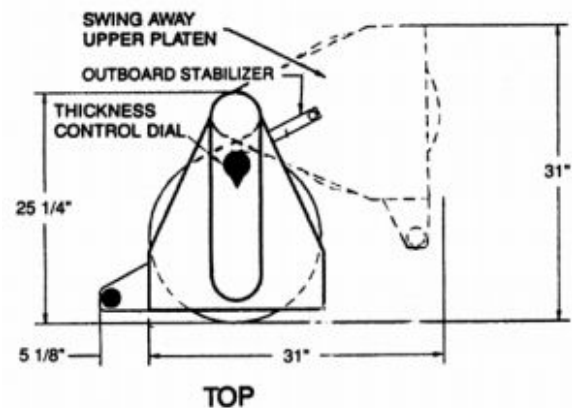


FIG. 1

Limited Machine Warranty

Proluxe warrants this dough press machine, when operated under normal conditions, to be free from manufacturing defects in material and workmanship for a period of one year on parts and labor from the invoice date.

This warranty will be effective only when Proluxe authorizes the original purchaser to

return the product to the factory in Perris, California freight prepaid and only when the product, upon examination, has proven to be defective.

This warranty does not apply to any machine that has been subjected to misuse, negligence or accident. Proluxe shall not be liable for the injury, loss or damage, direct or consequential, arising out of the use or the inability to use the product. No claim of any kind shall be greater in amount than the sale price of the product or part to which claim is made.

This is the sole warranty given by the company, it is in lieu of any other warranties, expressed or implied, in law or in fact, including the warranties of merchantability and fitness for a particular use, and is accepted such by the purchaser in taking delivery of this product.

SPECIFICATIONS

Electrical:
208V/50-60Hz/4600W/22.12 Amps
Requires 30 AMP outlet

Includes: 72" cord and 6-30P NEMA approved plug.

Shipping Weight:
180lbs. (82kg.)

INTERNATIONAL SYMBOLS

Symboles internationaux



Power Off
éteindre



Power On
allumer



Hot Surface
surface chaude



Risk of Electrical Shock
Risque de choc électrique



Protective Earth Terminal
Borne de terre de protection



Caution - Warning
chaud - avertissement

SAFETY SUMMARY



Warning

To reduce the risk of electrical shock, do not remove or open cover. No user-serviceable parts inside. Refer servicing to qualified personnel.

Avertissement

Pour réduire le risque de choc électrique, ne pas retirer ou couvercle ouvert Aucune pièce réparable par l'utilisateur, reportez-vous à du personnel qualifié.



Warning

In case of power cord damage, do not attempt to repair or replace the power cord. Please contact the manufacturer or the local distributor.

Avertissement

Pour une protection continue contre l'incendie et de choc électrique, remplacer avec le même type et calibre du fusible. Mis fusible supplémentaire nominale max 3A, 120 Vac.



Warning

For continued protection against fire and electric shock, replace with the same type

and rating fuse. Listed Supplemental Fuse rated max 3A, 120Vac.

Avertissement

Pour une protection continue contre l'incendie et de choc électrique, remplacer avec le même type et calibre du fusible. Mis fusible supplémentaire nominale max 3A, 120 Vac.



Caution Hot

Avoid touching hot surfaces while operating the machine.

Attention à chaud

Évitez de toucher les surfaces chaudes lorsque vous utilisez la machine.



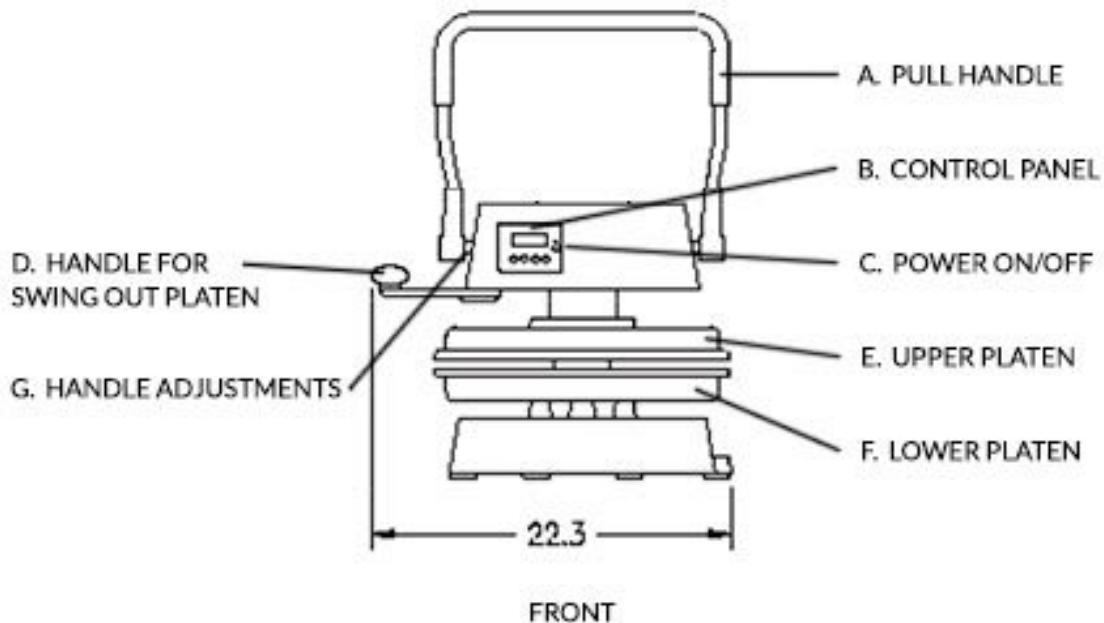
Caution

When servicing or cleaning the machine, make sure that the power cord is removed from the wall socket.

During normal operation, the base of the machine must be installed or placed above the wall socket.

Avertissement

Lors de l'entretien ou du nettoyage de la machine, assurez-vous que le cordon d'alimentation est débranché de la prise murale.



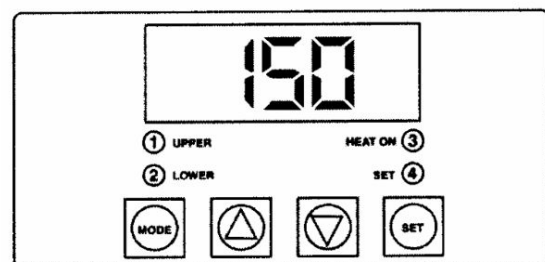
Familiarize yourself with the controls and operating mechanisms before using the Endurance X2M.

(H) Handle Adjustments (See tightening the pull-down handle.)

(A) Pull-down pressing handle for raising and lowering the upper platen. This action forces the closing of the platens.

OPERATION TEMPERATURE & TIMER CONTROL

(B) Control Panel (See control board operations)



(C) On/Off button. The green light above the button will illuminate when powered on.

(D) Handle for swing-out platen.

FIG. A

(E) Upper Platen

Solid State Controller

(F) Lower Platen

This controller has three (3) control features:
 1. Temperature - May be set from 100°-425°F (38°-163°C) Factory default is 200°F.

2. Time – Time may be set from 1 second to 10 minutes.

3. Counter – Cycle counter counts the number of applications from 1 to 9999 (see additional Notes – Counter).

4. “2 Lower” (Fig. A) Refers to models using upper and lower heated surfaces.

Controller Operation

1. Viewing the Modes of Operation:

To view the set points of temperature, timer and counter, press MODE button to view the desired mode of operation.

2. Changing Temperature:

Press MODE button until temperature is displayed.

Press and hold SET button while pressing the UP (↑) and DOWN (↓) arrow buttons to desired temperature setting.

Fahrenheit/Celsius Conversion:

The temperature controller can be programmed to display either °F or °C. Press the MODE button until the temperature is displayed . Then push a hold the SET button for 10 seconds.

3. Changing Time:

Press MODE button until time is displayed. Press and hold SET button while pressing the UP (↑) and DOWN (↓) arrow buttons to desired timer setting.

4. Resetting the Counter:

Press MODE button until the counter is displayed.

To reset the counter (# of cycles), simultaneously push UP (↑) or DOWN (↓) arrow buttons (approx. 5 seconds).

DOUGH PRESSING OPERATIONS

Pressing Dough:

For best results, your dough should be proofed before pressing, but it will also press directly out of your refrigerator. Flour is not required to press a crust and **should not** be dusted on any part of the machine.

1. Check to see if you have the correct type of electrical current or serious damage could occur.

2. Press the power button, the green light above will illuminate when powered on.

3. Set your desired temperature on the control panel by using FIG. A and the instructions above. Testing with your own dough may desire a different setting.

Note: Heat is provided in the upper platen is only for purposes of enabling the dough to flow more rapidly in the pressing cycle. The heat IS NOT intended for baking.

5. Swing open the upper platen and apply a quick spray of a good water based food release on the lower platen.

6. Place your pre-portioned ball of dough in the center of the lower platen mold. Add another light spray to the top of the dough ball.

7. Close the platen and pull the handle down to begin pressing.

8. The timer will automatically begin and the handle will release when the time cycle is completed. Pull the handle back to starting position and remove your product.

9. Remove the finished product by rotating the upper platen until you have proper space to remove your dough.

10. Remove the crust, place on a pan or peel, add toppings and bake.

Changing the Lower Platen Mold:

Always use heat safe gloves when handling hot lower platen molds.

1. Wipe platen clean of excess residue.
2. Use both hands to lift the existing mold and store for easy accessibility.
3. Set your next platen size into place.
4. Allow your new bottom platen mold come to temperature before pressing.

ADDITIONAL NOTES

Tightening the Pull-down Handle

The pull-down pressing handle requires adjustment periodically to prevent it from free falling. Whenever the handle becomes loose it can easily be tightened.

1. Using a 3/16" hex shaped allen wrench, insert in key slot located on the right beneath the upper shroud.

2. Tighten until the press action of the handle becomes firm.

RECOMMENDED SEASONING & CLEANING PROCEDURES

Before use you must properly season your platens to prevent your dough from sticking.

Tools Required:

- Food release
- Soapy water solution
- Washcloth
- Paper towels

DO NOT use steel wool or harsh abrasives, it will you will cause costly damage.

1. Before cleaning make sure the unit is turned off.
2. Spray lower platen with approved food release/oil spray.
3. Wipe oil across lower platen with paper towel.
4. Wipe oil across upper platen.
5. Mix a warm dish soap and water solution.
6. Soak washcloth and wring to remove excess water.
7. Wipe lower and upper platen with damp cloth.

PREVENTATIVE MAINTENANCE

Proluxe machines are relatively maintenance free. For a long lifespan, the following preventative maintenance should be followed:

Daily Care:

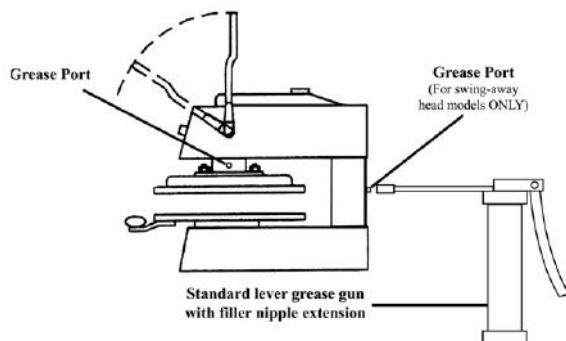
1. Platens: Turn your machine off and allow to cool down before attempting to clean. These platens should only be cleaned with mild soap and warm water then wiped off with a clean, soft cloth or soft sponge.

2. Exterior surfaces: Wipe daily with mild soap and warm water.

DO NOT use ice or cold water to cool the unit down. This can cause platen to warp.

Piston Maintenance:

In order to ensure pop and trouble free operation of the press piston, it is important that the machine be lubricated once every three months, under normal operation. High volume users may require more frequent lubrication.



Please follow these instructions:

1. Locate the grease port on the machine. Machines with pull down arms has a single grease port located below the upper head on the right side of the vertical post.
2. Place grease gun head against grease port and apply enough pressure to allow gun head to engage the grease port.
3. Squeeze handle of grease gun. This will force the grease into the piston.

The lubricant use must be USDA-H-I authorized for food machinery. This lubricant can be ordered through Proluxe, part # 110-002.

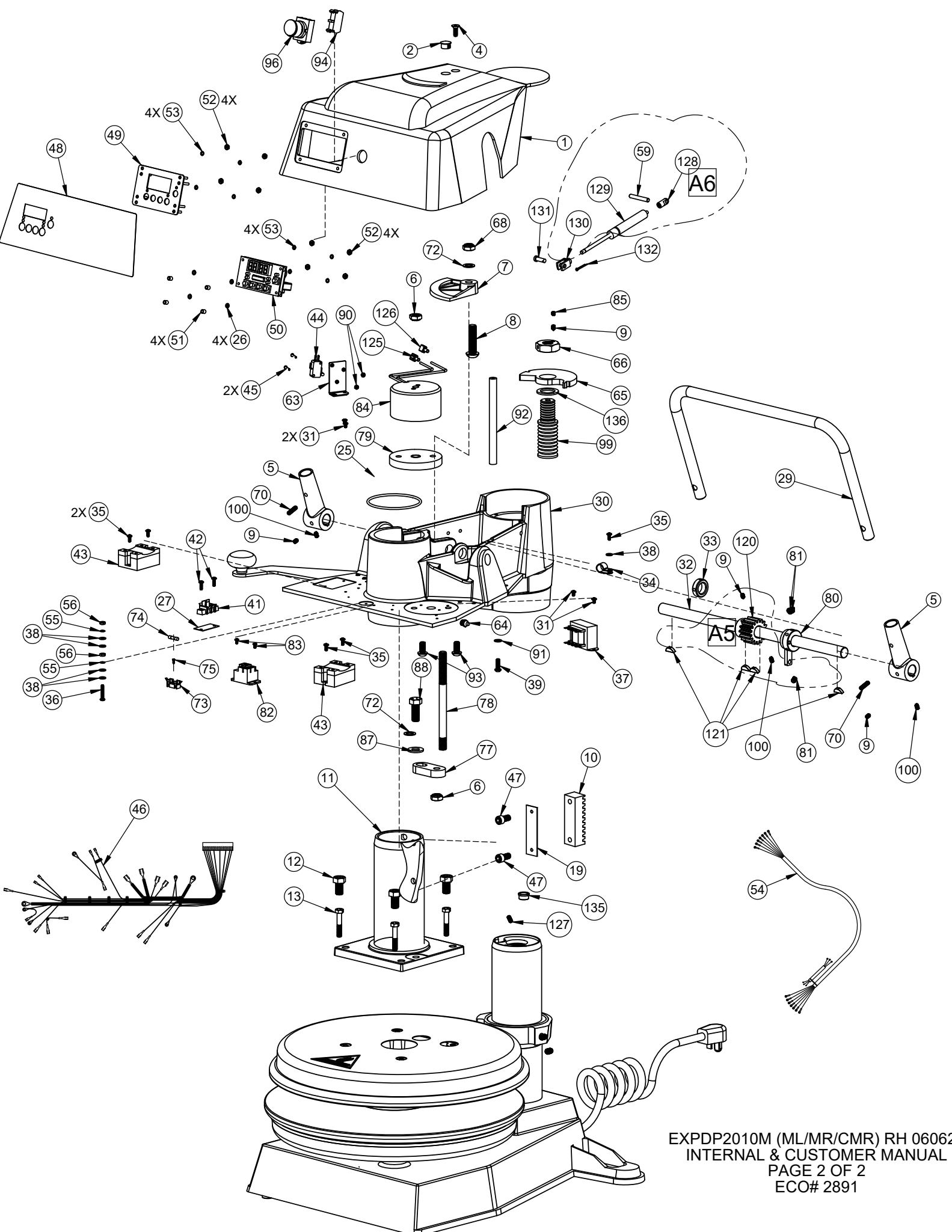
Service Problems:

Contact our factory at (800) 624-6717 (U.S. only) or approved service agency. When contacting the factory for information, parts or service instructions, please provide the serial number of the machine be provided. This number can be found on the serial plate located on the rear of the machine.

Troubleshoot Guide - Model #: DP2010M

Problem	Cause	Action	Ref #
Power button on digital controller face is depressed but doesn't turn on.	1. Power cord is not plugged in.	1. Plug the power cord into wall receptacle and power button.	68
	2. Circuit breaker is tripped off in the site's breaker box.	2. Reset circuit breaker that the grill is plugged into. Depress Power Button to turn on.	-----
	3. Transformer has taken an electrical surge and is damaged.	3. Replace Transformer after you check secondary side of transformer. If working properly, you should receive 12vdc.	91
	4. Check voltage on the secondary side of the Transformer. If you read 12VDC then you are receiving voltage to the controller.	4. Replace controller. Controller should be on once the power button is depressed.	85
	5. Possible blown fuse.	5. Replace fuse.	105
Digital controller's LED's are scrambled or randomly erratic. If when turning on, the display will first go to segment check	1. Possibly a component on the Digital controller is damaged.	1. Replace digital controller.	-----
	2. Control needs to reset.	2. While unit is on unplug unit, wait for 1 min. Then plug machine on again and depress the power button.	85
Digital controller on startup goes through LED segment check (8888) then to version # and then loops back to to the above reboot.	The relay driver on the digital control may be blown.	Replace digital controller.	85
Digital display shows PROB. No heat on upper platen.	Sensor lost it's continuity as shown on a muti-meter.	Disconnect prob that is open (no continuity as shown on a multi-meter. Must replace sensor (RTD). Do not cut and splice new sensor. Install new 2000 ohm RTD sensor to under side of heat platen and reconnect to the controller.	41
When depressing the	The tactile buttons under the overlay	Carefully (no too much at one	

tactile button on digital controller, nothing happens.	may be not close enough to activate. Same goes if the buttons are already pressed by overlay without depressing button.	time to avoid fracturing the traces on the controller) tighten the nuts on the back of the controller until button activate. Same goes in reverse if buttons are held down by the overlay.	
Digital display shows relay and particular zone is overheating. Beeper not functioning or intermittent beeper sound.	<ol style="list-style-type: none"> 1. The relay on the switched side is not opening to regulate temperature. 2. Beeper on digital control board failed. 	<ol style="list-style-type: none"> 1. Replace the relay. 2. Replace digital controller board 	<p>92</p> <p>85</p>
If setpoint is reached but slightly off in temperature.	Offset may need to be calibrated and adjusted.	Call (800) 624-6717 ext. 129 for instructions.	
Heater platens overheating	If the relay (depending on the year of the model) on the coil side are receiving 12vdc indicates the controller is functioning properly. On the switching side of the relay, is there 120 vac going to the heater in question. If there is no voltage on the to the switching side of the relay to the heaters, the relay is not working properly.	Replace relay If the controller's heat-on LED is not lit indicating the controller is working properly.	92



PROLUXE PARTS LIST FOR DP2010M (ML/MR)

ITEM #	DESCRIPTION	DP2010MLE 208 ~ AC	DP2010MRE 208 ~ AC	DP2010CMRE 208 ~ AC	QTY.
1	HOUSING, MACHINED	DP2990101	DP2990101	DP2990101	1
2	LOCK PLUG, 5/8" ID	DP17502	DP17502	DP17502	1
3	CABLE STRAIN RELIEF	3231	3231	3231	1
4	SCREW, SOCKET FLAT HEAD, 1/4-20 X 3/4	SF142034	SF142034	SF142034	1
5	HANDLE SOCKET	11016650	11016650	11016650	2
6	NUT, LOCK NUT 1/2-20, DP2300	NHSL1220	NHSL1220	NHSL1220	2
7	CAM RAMP ASSEMBLY	1109312	1109312	1109312	1
8	SCREW, BUTTON SOCKET HEAD 1/2-20 X 2	SB12202	SB12202	SB12202	1
9	SCREW, SET 1/4-20X3/8" CONE POINT	SST142038CP	SST142038CP	SST142038CP	4
10	GEAR RACK	1109380	1109380	1109380	1
11	PISTON ASSEMBLY	DP10607	DP10607	DP10607	1
12	BOLT, LEVEL ADJUSTMENT	1109367	1109367	1109367	4
13	BOLT, HEX 5/16-18 X 1 3/4	BH51618134G5	BH51618134G5	BH51618134G5	4
14	KNOB, SWING AWAY	110017	110017	110017	1
15	HANDLE, SWING AWAY	11023004501	11023004501	11023004501	1
17	SPRING, DIE RED MEDIUM HEAVY DUTY	11020106	11020106	11020106	4
18	DP2010M ASSEMBLY, BASE	DP2061101	DP2061101	DP2061101	1
19	SHIM, GEAR RACK	110144120	110144120	110144120	1
20	COVER PLATE, BASE	11010954	11010954	11010954	1
21	BUSHING, INSULATING 1/2	110966022	110966022	110966022	1
22	WIRE SUPPORT TUBE	110200020	110200020	110200020	1
24	POWER CORD	110573175	110573175	110573175	1
25	ORING #2-238 N-70, PISTON	238N70	238N70	238N70	1
26	WASHER, STEEL .311 O.D. X .150 I.D. X .20 THK	311150019	311150019	311150019	4
27	MARKER STRIP TERMINAL BLOCK ARM, #2 SINGLE	MS6992	MS6992	MS6992	1
28	SCREW, SET 8-32 X 1	SST8321	SST8321	SST8321	1
29	HANDLE, PRESSURE (DP2010)	DP12808	DP12808	DP12808	1
30	ARM MACHINED	DP1062101	DP1062101	DP1062101	1
31	SCREW, PHILLIP PAN HEAD 8-32 X 1/4	SP83214	SP83214	SP83214	4
32	GEAR BAR	1109361	1109361	1109361	1
33	COLLAR, GEAR BAR	11013183	11013183	11013183	1
34	CLAMP, CABLE 1/2	CC12	CC12	CC12	3
35	SCREW, PHILLIPS PAN HEAD 8-32 X 3/8	SP83238	SP83238	SP83238	7
36	SCREW, PAN HEAD 8-32 X 1	SP8321	SP8321	SP8321	1
37	TRANSFORMER	11096975	11096975	11096975	1
38	WASHER, SAE #8	WSAE8	WSAE8	WSAE8	11
39	SCREW, BUTTON HEAD 1/4-20 X 3/4	SB142034	SB142034	SB142034	1
40	HEX BOLT STAINLESS STEEL, 1/4-20 X 1/2	BH142012S	BH142012S	BH142012S	3
41	TERMINAL BLOCK (ARM #2 SINGLE)	11098414	11098414	11098414	1
42	SCREW, PHILLIPS PAN HEAD 8-32 X 1/2	SP83212	SP83212	SP83212	4
43	SOLID STATE RELAY	PL2425	PL2425	PL2425	2
44	MICRO SWITCH ROLLER WHEEL	1101017044	1101017044	1101017044	1
45	SCREW, ROUND HEAD 4-40 X 5/8	SR44058	SR44058	SR44058	2
46	WIRE HARNESS	11017815450	11017815450	11017815450	1
47	SCREW, SOCKET HEAD 3/8-16 X 3/4	SSH381634	SSH381634	SSH381634	2
48	OVERLAY, DIGITAL CONTROL PANEL	ODP1100B	ODP1100B	ODP1100B	1
49	CONTROL, FACIA PLATE ASSEMBLY	11086027	11086027	11086027	1
50	DIGITAL CONTROL, BLUE REV. 1.10	110178154052B	110178154052B	110178154052B	1
51	SPACER, NYLON 1/4	110969111	110969111	110969111	4
52	NUT, HEX 6-32	NH632	NH632	NH632	8
53	WASHER, #6 INTERNAL TOOTH LOCK	WLIT6	WLIT6	WLIT6	8
54	POWER DISTRIBUTION CABLE	11017815467	11017815467	11017815467	1
55	WASHER, #8 INTERNAL TOOTH LOCK	WLIT8	WLIT8	WLIT8	4
56	NUT, HEX 8-32	NH832	NH832	NH832	4
57	TERMINAL BLOCK BASE, #5 DOUBLE	6015	6015	6015	1
58	FITTING, ZERK 1/8" PIPE	B610	B610	B610	1
59	HOLDER, PIN (GAS SPRING)	DP12804	DP12804	DP12804	1
60	ORING, POST/COLLAR	MPSS062	MPSS062	MPSS062	1
61	SCREW, SOCKET HEAD 5/16-18X1",	SSH516181D	SSH516181D	SSH516181D	1
62	COLLAR POST ARM	DP2162301	DP2162301	DP2162301	1

PROLUXE PARTS LIST FOR DP2010M (ML/MR)

ITEM #	DESCRIPTION	DP2010MLE 208 ~ AC	DP2010MRE 208 ~ AC	DP2010CMRE 208 ~ AC	QTY.
63	BRACKET, MICRO SWITCH	1101021213	1101021213	1101021213	1
64	FITTING, ZERK 1/4-28	B792	B792	B792	1
65	THRUST PLATE	DP15404	DP15404	DP15404	1
66	NUT, LOCKING JAM (MACHINED)	11070	11070	11070	1
68	NUT, LOCK NUT 1/2-20	NHSL1220	NHSL1220	NHSL1220	1
69	SCREW, SET 3/8-16 X 1/2	SST381612	SST381612	SST381612	6
70	SET SCREW SOCKET 1/4-20 X 7/8	SST142078	SST142078	SST142078	2
71	MARKER STRIP #5	MS6015	MS6015	MS6015	1
72	WASHER, SPLIT LOCK 1/2	WL12	WL12	WL12	2
73	FUSE HOLDER 1 AMP	MPPF708	MPPF708	MPPF708	1
74	FUSE, 1 AMP, 250V, 250W, LOW BLOW	MPPF701R	MPPF701R	MPPF701R	1
75	SCREW PHILLIPS PAN 2-56 x 1/4	SP25614	SP25614	SP25614	1
76	FEET, RUBBER	RF209	RF209	RF209	4
77	MASTER LINK BRACKET	DP10603	DP10603	DP10603	1
78	MAGNET POST	DP10602	DP10602	DP10602	1
79	WASHER PLATE	DP10604	DP10604	DP10604	1
80	GAS SPRING BRACKET WELDING ASSEMBLY	DP12803	DP12803	DP12803	1
81	SET SCREW KNURLED CUP POINT 5/16-18 x 3/8	SST5161838KN	SST5161838KN	SST5161838KN	3
82	RELAY, MECHANICAL	110942520	110942520	110942520	1
83	SCREW, PAN HEAD 6-32 X 1/4	SP63214	SP63214	SP63214	6
84	ELECTROMAGNET, 12V 36W 600lbs.	11017815413	11017815413	11017815413	1
85	SCREW, SET 1/4-20 X 1/4	SST142014	SST142014	SST142014	1
86	BOLT HEX SLOTTED 8-32 X 1/4	BH83214	BH83214	BH83214	6
87	WASHER, SAE 1/2	WSAE12	WSAE12	WSAE12	1
88	BOLT HEX, 1/2-20 X 1-1/4 GRADE 5	BH1220114G5	BH1220114G5	BH1220114G5	1
89	CONVERTER, AC/DC 12V 50W	DP16502	DP16502	DP16502	1
90	NUT, HEX 4-40	NH440	NH440	NH440	2
91	WASHER, SAE 1/4"	WSAE14	WSAE14	WSAE14	1
92	HOUSING SUPPORT ROD	DP10605	DP10605	DP10605	1
93	BUTTON HEAD SCREW 3/8-16 X 3/4"	SB381634	SB381634	SB381634	2
94	CONTACT N/O SCREW TYPE, GE	110101751	110101751	110101751	1
96	BLACK MUSHROOM CAP	11051850R	11051850R	11051850R	1
97	MANUAL, DP2010M	MDP2010M	MDP2010M	MDP2010M	1
98	BUSHING, ALIGNMENT	110415602	110415602	110415602	1
99	ADJUSTABLE SCREW	110230042	110230042	110230042	1
100	SET SCREW KNURLED CUP POINT 1/4-20 x 3/8	SST142038KN	SST142038KN	SST142038KN	3
101	UPPER PLATEN MACHINED	110074208P	110074208P	110074208CC	1
102	WIRE, TGGT, 14 GA. (HEATER)	110069	110069	110069	10.67 FT.
103	TFE, SHRINK TUBING 7AWG	110131	110131	110131	.66 FT.
104	TERMINAL, RING #6 14-16 GA HIGH TEMP	1601HT	1601HT	1601HT	2
105	TERMINAL, RING #8 14-16 GA	1604	1604	1604	4
106	TERMINAL, QD 3/16 X 18-22 GA	2280	2280	2280	2
107	WASHER, SAE #6	WSAE6	WSAE6	WSAE6	2
108	TERMINAL, FEMALE MOLEX #BB-2141	MPSQ100	MPSQ100	MPSQ100	1
109	WIRE, TFE 14GA. GREEN	WTFE14G	WTFE14G	WTFE14G	5.25 FT.
110	RTD, SENSOR ASSEMBLY	110949110	110949110	110949110	2
112	SLEEVING, PVC WIRE	OPVC1050	OPVC1050	OPVC1050	1.33 FT.
113	BOLT, SHOULDER 3/8 DIA X 1-3/4 LENGTH X 5/16-18	11020003	11020003	11020003	4
114	TFE, NON SHRINK TUBING	110133	110133	110133	.33 FT.
115	TERMINAL, #6 RING x 18-22 GA	2202	2202	2202	2
116	HIGH TEMPERATURE EDGE TRIM	DP20804	DP20804	DP20804	1
117	SHROUD, UPPER PLATEN	1109336	1109336	1109336	1
118	SHROUD, PLATEN	110230036	110230036	110230036	1
119	LOWER PLATEN MACHINED, DP2350M/DP2010M	DP22432208P	DP22432208P	DP22432208P	1
120	GEAR, PINION	1109360	1109360	1109360	1
121	PLAIN STEEL WOODRUFF KEY, 3/16 X 3/4	KW931634	KW931634	KW931634	4
122	SCREW, BUTTON HEAD 1/4-20 X 5/8	SB142058	SB142058	SB142058	1
123	BOLT, SHOULDER 3/8 X 2	11023003	11023003	11023003	1
124	14-16 GA #10 FORK TERMINAL INSUL.	1626	1626	1626	1
125	TERMINAL, 1/4" 18GA 22GA FEMALE. FULLY/INS, RED	2270FIN	2270FIN	2270FIN	1

PROLUXE PARTS LIST FOR DP2010M (ML/MR)

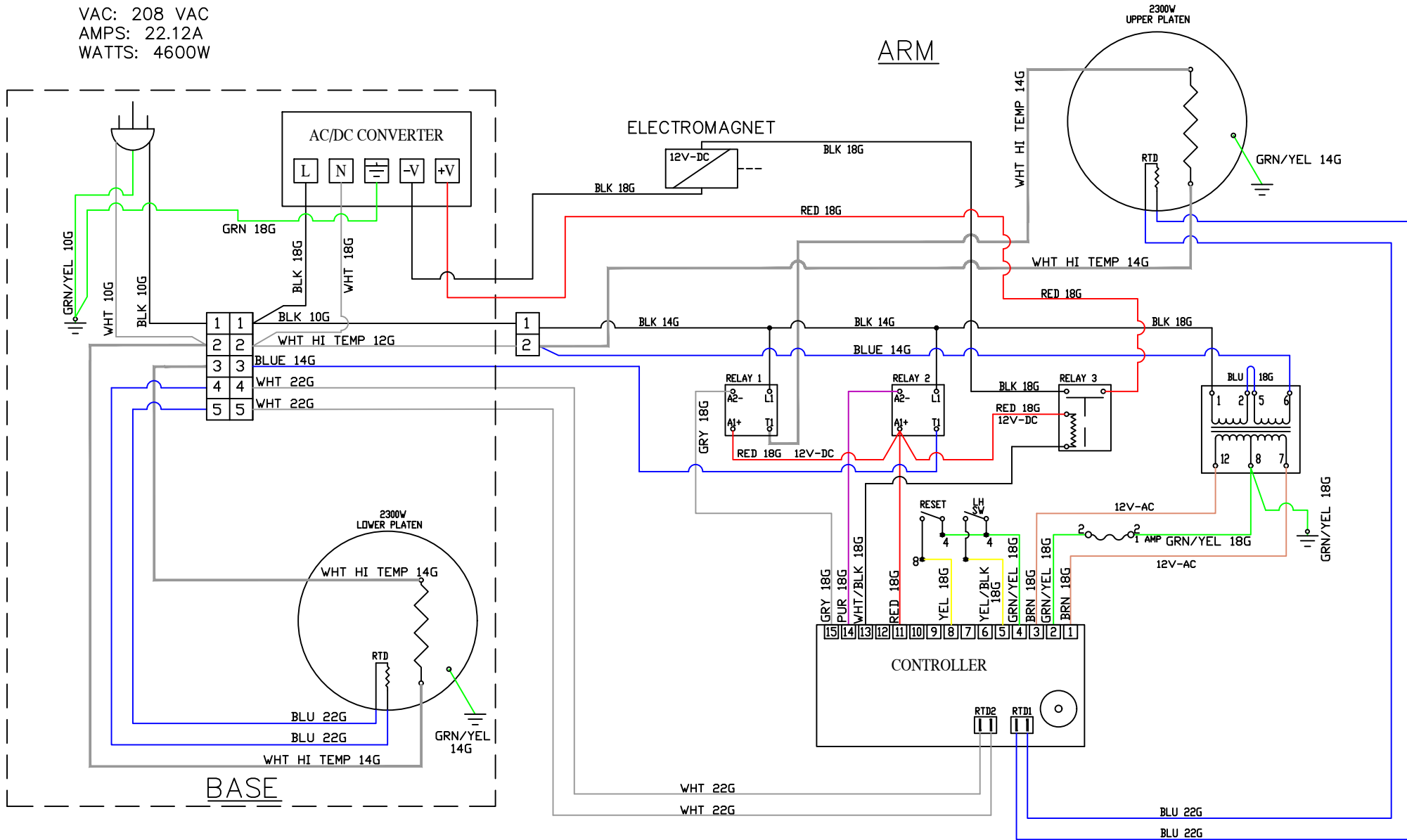
ITEM #	DESCRIPTION	DP2010MLE 208 ~ AC	DP2010MRE 208 ~ AC	DP2010CMRE 208 ~ AC	QTY.
126	TERMINAL, 1/4" QD FEMALE 14-16, FULLY INSUL BLUE	1670FIN	1670FIN	1670FIN	1
127	SCREW, SET 1/4-20 X 1/2	SST142012	SST142012	SST142012	1
128	EYELET END MACHINED	1101098154C5	1101098154C5	1101098154C5	1
129	GAS SPRING, 30LB FORCE	DP12810	DP12810	DP12810	1
130	CLEVIS, STEEL	DP12809	DP12809	DP12809	1
131	CLEVIS PIN 1/4" DIA X 3/4" LONG	110109861	110109861	110109861	1
132	PIN, COTTER 3/32 X 3/4	PC33234	PC33234	PC33234	1
133	RETAINING PLATE WELDING ASSEMBLY	DP22402	DP22402	DP22402	1
134	SCREW FLAT HEAD SOCKET, 5/16-18 X 3/8 S.S.	SF5161838S	SF5161838S	SF5161838S	4
135	BUSHING, POST	DP13125	DP13125	DP13125	1
136	WASHER, THRUST	11059	11059	11059	1
137	SET, SCREW, 3/8-16 x 1/2, KNURLED CUP POINT	SST381612KN	SST381612KN	SST381612KN	2

PROLUXE

DP2010 WIRE DIAGRAM

MASTER COPY
Date 04/19/19

VAC: 208 VAC
AMPS: 22.12A
WATTS: 4600W



Warranty & Return Policy

Proluxe warrants all products manufactured by it against defects in workmanship or materials from the date of purchase for a period of 1 year on parts and labor. This warranty applies to only equipment purchased and used in the United States.

Warranty period shall begin when equipment ships. Warranty travel will only be covered for 60 miles.

ALL WARRANTY SERVICE CALLS MUST BE APPROVED BY PROLUXE. IF THIS PROCEDURE IS NOT FOLLOWED, WARRANTY SERVICE WILL NOT BE COVERED. WARRANTY SERVICE WILL BE PAID ON STRAIGHT TIME, OVERTIME WILL NOT BE COVERED.

EXCLUSIONS

The warranties provided by Proluxe DO NOT apply to the following:

- Damage due to misuse, abuse, alteration, or accident.
- Improper or unauthorized repairs.
- Submerged in water.
- Damage in shipment.
- Equipment exported to foreign countries.

Special Order Equipment and Accessories

Cannot be canceled and are not returnable unless defective within the terms of this warranty.

In no event shall Proluxe be liable for consequential damages arising out of the failure of any of its products if operated improperly or caused by normal wear or damaged by operator abuse.

Limited Lifetime Warranty on Heating Elements

If replacement is needed, Proluxe will send the new part at no charge but labor will not be covered unless the unit is still under the 1-year manufacturer warranty.

RETURNED MERCHANDISE POLICY

Should it become necessary to return any of the company's products, the following instructions must be adhered to: First, contact our customer service department for approval and a return authorization number. Please have the serial number of your item available at that time. All merchandise must be shipped freight prepaid by customer or service agency. Subject to the inspection of the product by the company, a restocking charge of 20% of the Net purchased price paid to Proluxe will be assessed. Merchandise may not be returned for credit without prior written approval of Proluxe.

Collect shipments will not be accepted. No returns after 60 days of original shipment date on machines. Purchased parts may not be returned after 30 days. If upon inspection by Proluxe or its authorized agent it is determined the equipment has not been used in an appropriate manner, has been modified,

or has not been properly maintained, or has been subject to misuse, misapplication, neglect, abuse, accident, unauthorized modification, damage during transit, delivery, fire, flood, act or war, riot or act of God, then this warranty shall be deemed null and void.

TERMS & CONDITIONS

1. Price List prices are suggested retail prices and are shown in U.S. Dollars.

2. Terms of Payment: 1% 10 days, NET 30 days.

3. New Accounts: Satisfactory credit information must be provided before open account status can be extended.

Unless agreed otherwise, all shipments will be made C.O.D., Cash in advance.

4. Pricing: Prices, specifications, model numbers, capacities and accessories are subject to change without notice.

5. Freight/Routing: Method of shipment will be determined by Proluxe unless otherwise advised by purchaser.

6. Damaged Claims: All merchandise shipped at purchaser's risk. Inspection must be made by purchaser at time goods are received. If goods are damaged, the PURCHASER shall request that the agent of the transportation company make a written notation on the proper shipping documents immediately and then file a claim for damages.

Note: Goods damaged in shipping are non-returnable.

7. Returns: Machines may not be returned after 60 days. Purchased parts may not be returned after 30 days. A restocking fee of 20% will be assessed on non-warranty returns.

8. Taxes: Prices indicated herein DO NOT include State, Federal, Local or foreign taxes or duties, nor do they include fees, permits, insurance or other levies, all of which are the responsibility of the purchaser.

9. All orders are subject to acceptance by Proluxe.

10. Possession of this price list shall not be considered an offer to sell.